



Olfa P-800

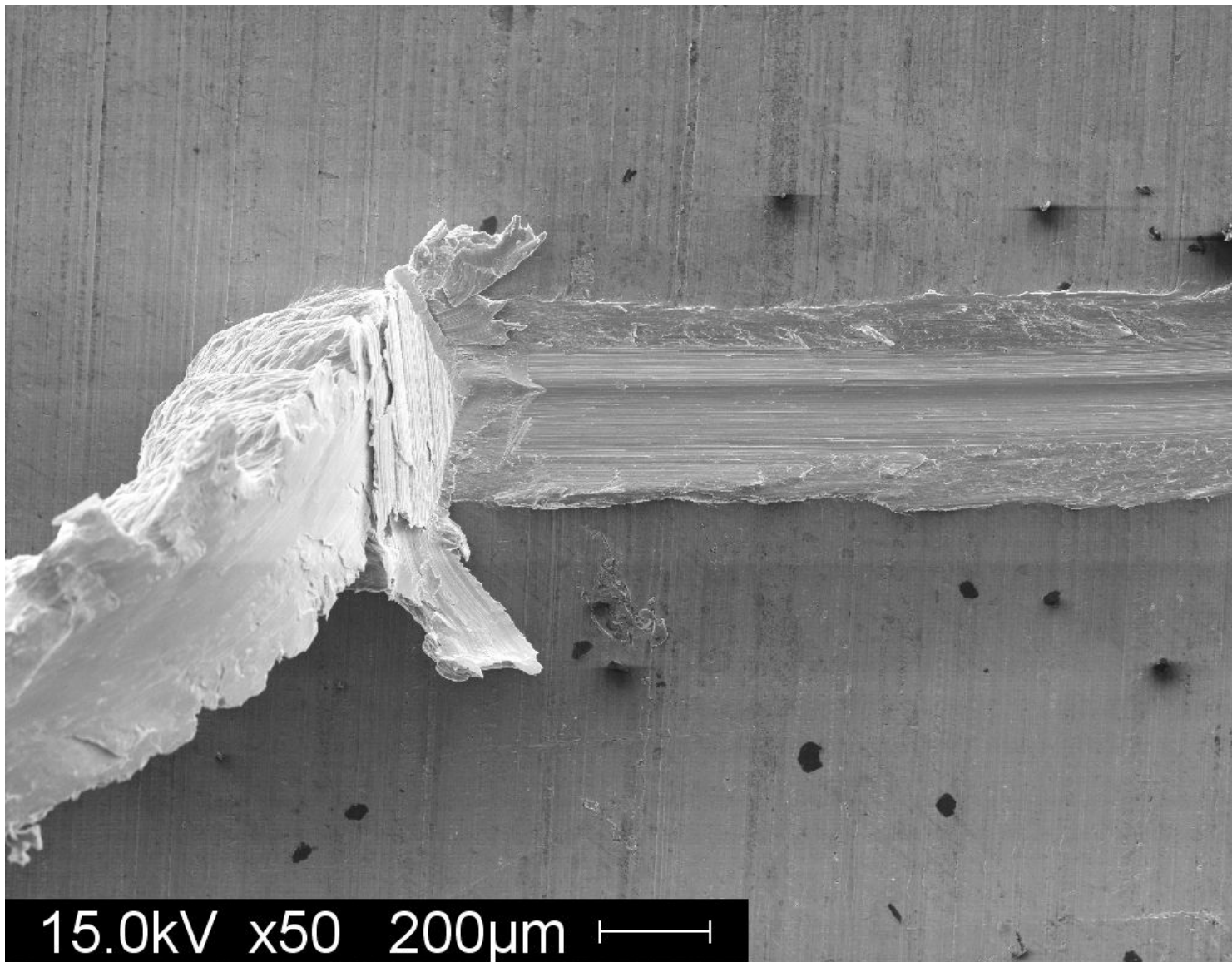
Ben Church

bcchurch-at-yahoo-dot-com

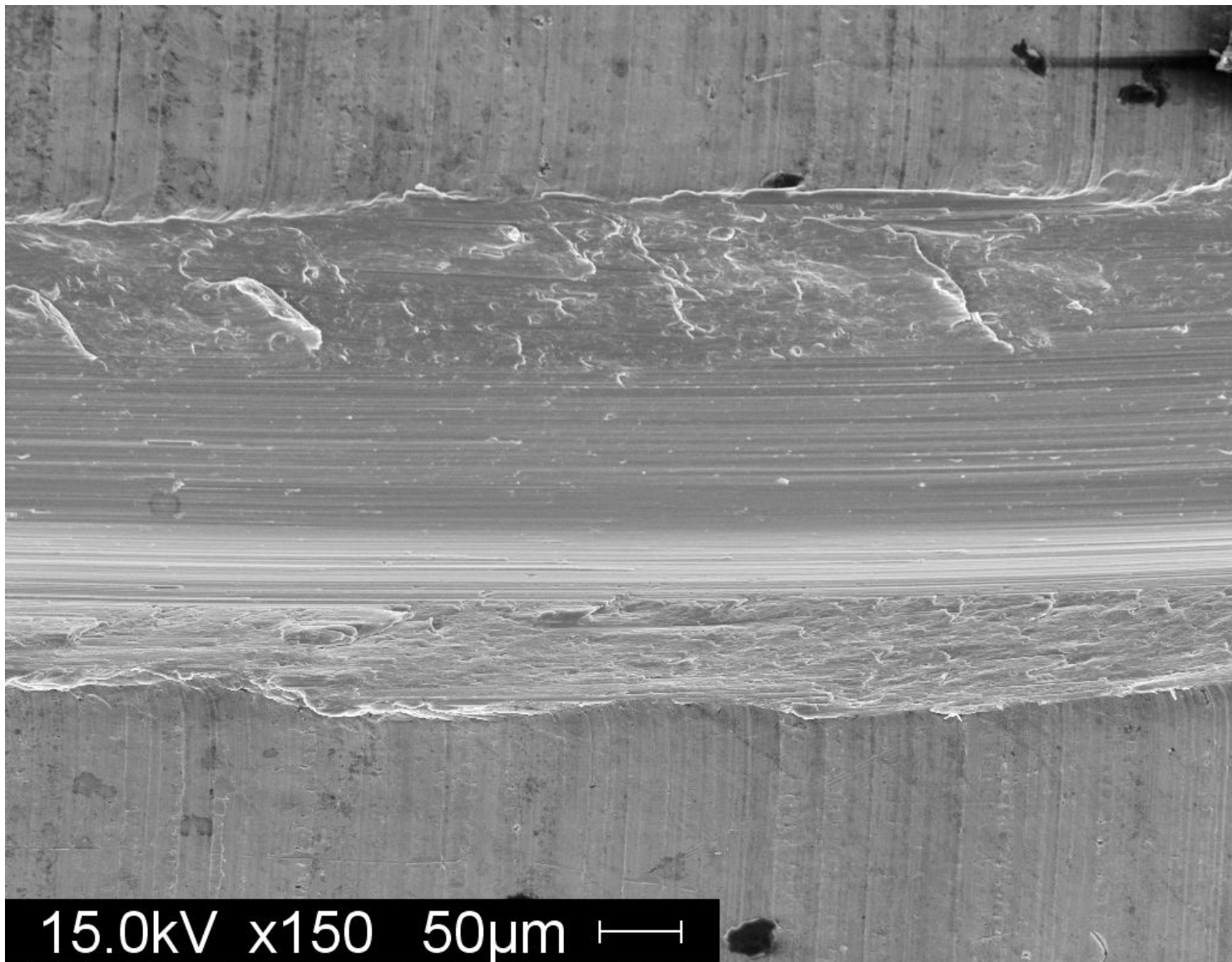
February 20, 2009



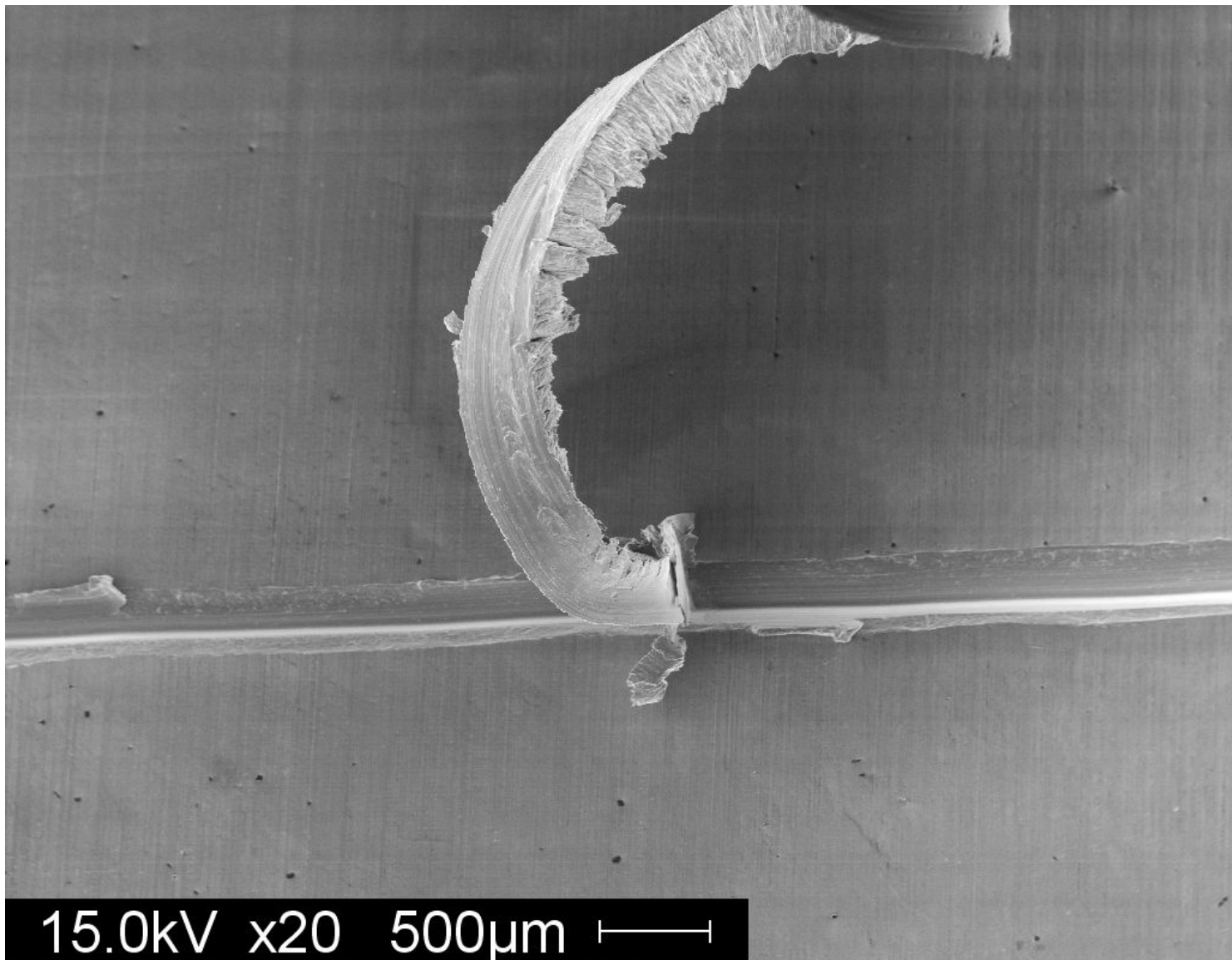
CreativeCommons.org Attribution-Noncommercial-Share Alike 3.0 United States License



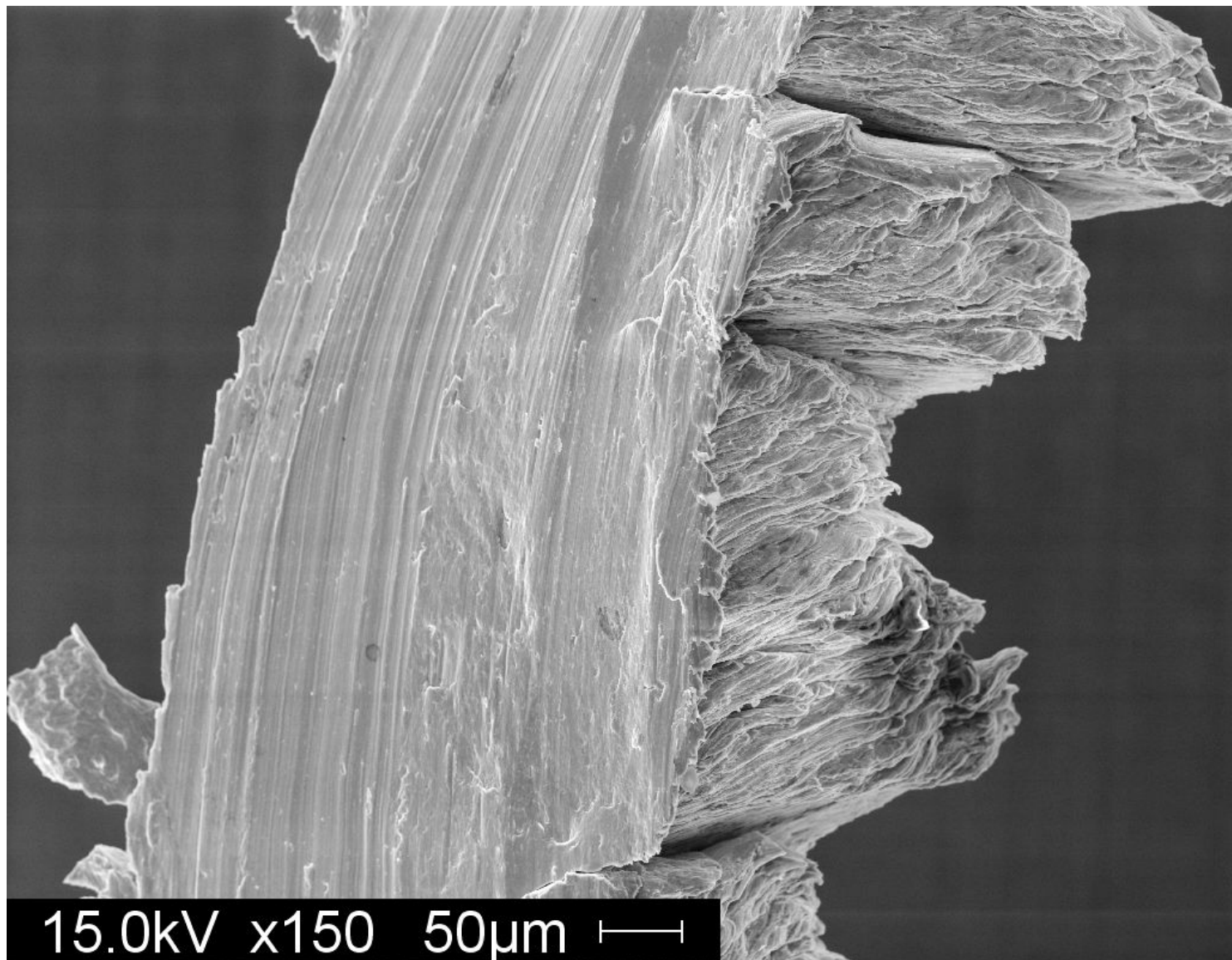
Top down view of one pass with the Olfa knife on 0.025" 6061-T6



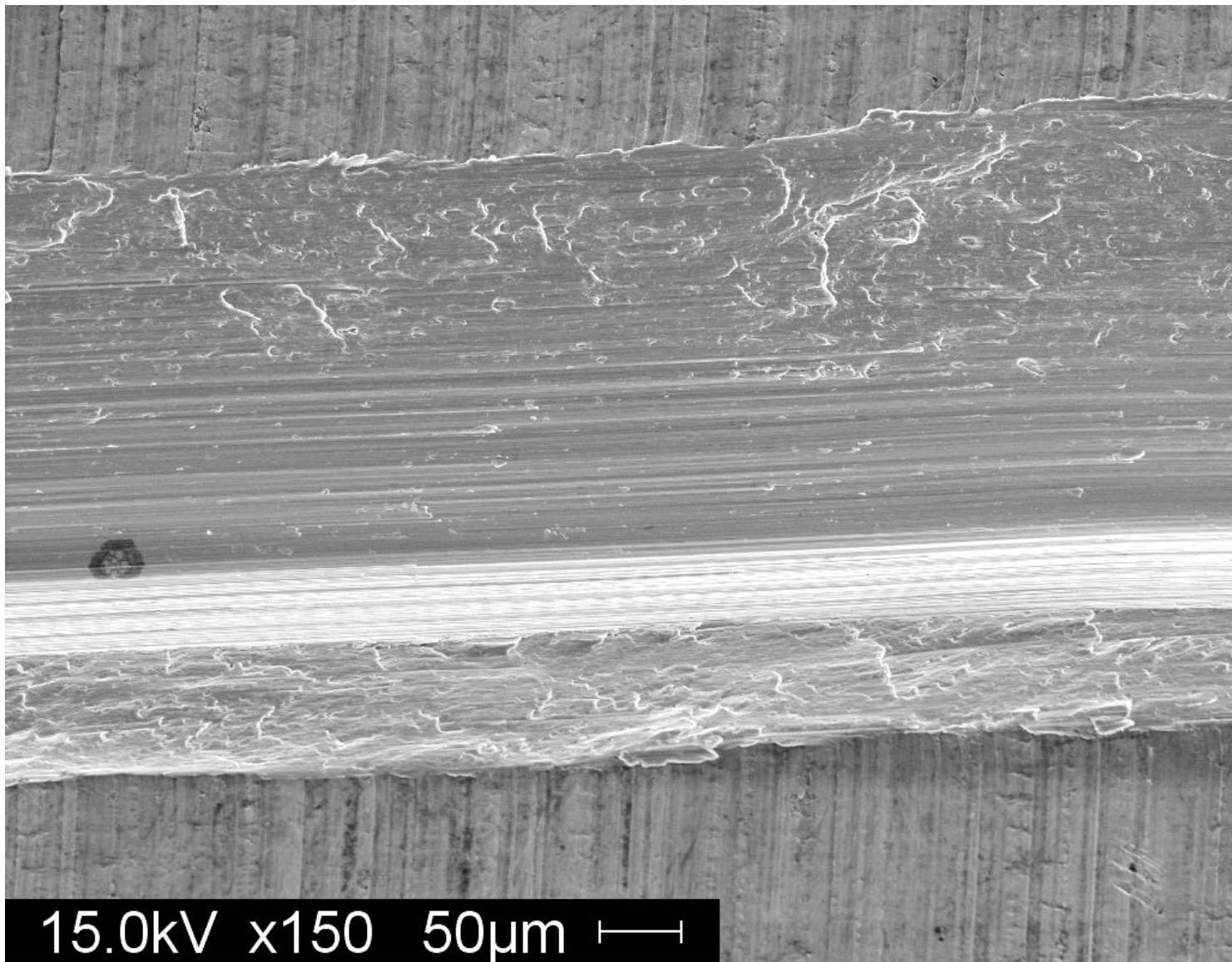
Enlarged view of the trench formed after a single pass with the Olfa.



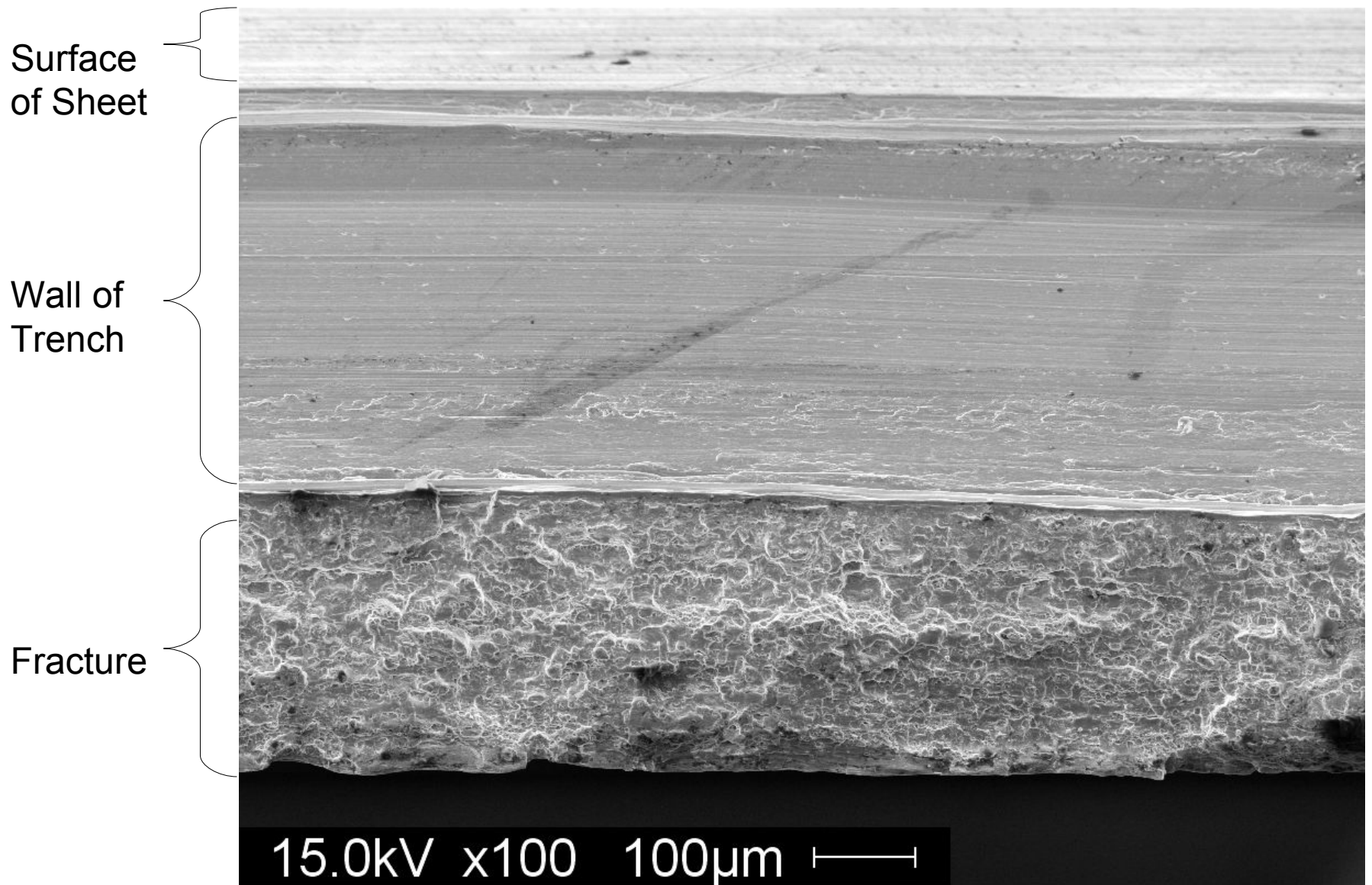
Left side: one pass. Right side: two passes.



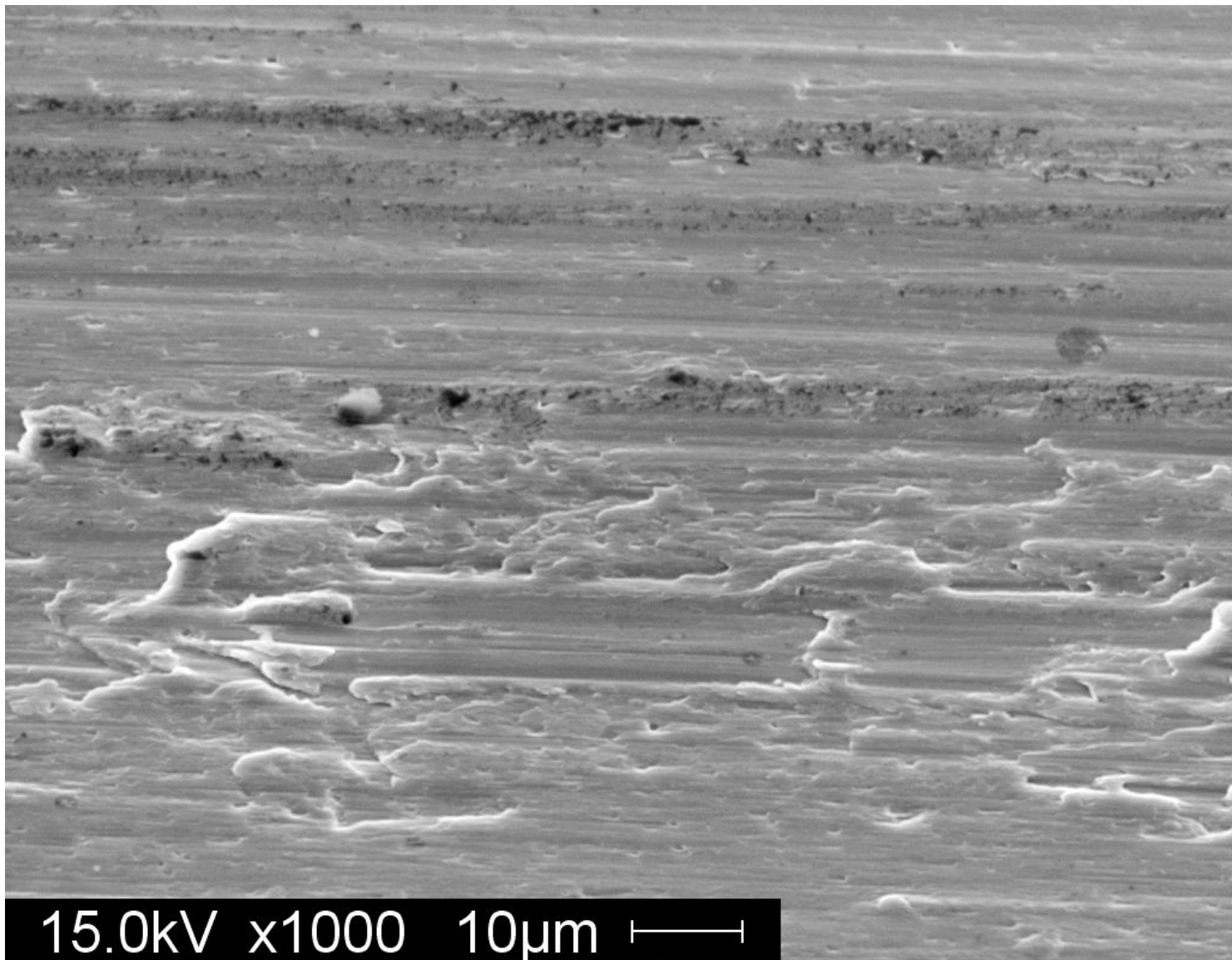
“Turnings” produced by the Olfa.



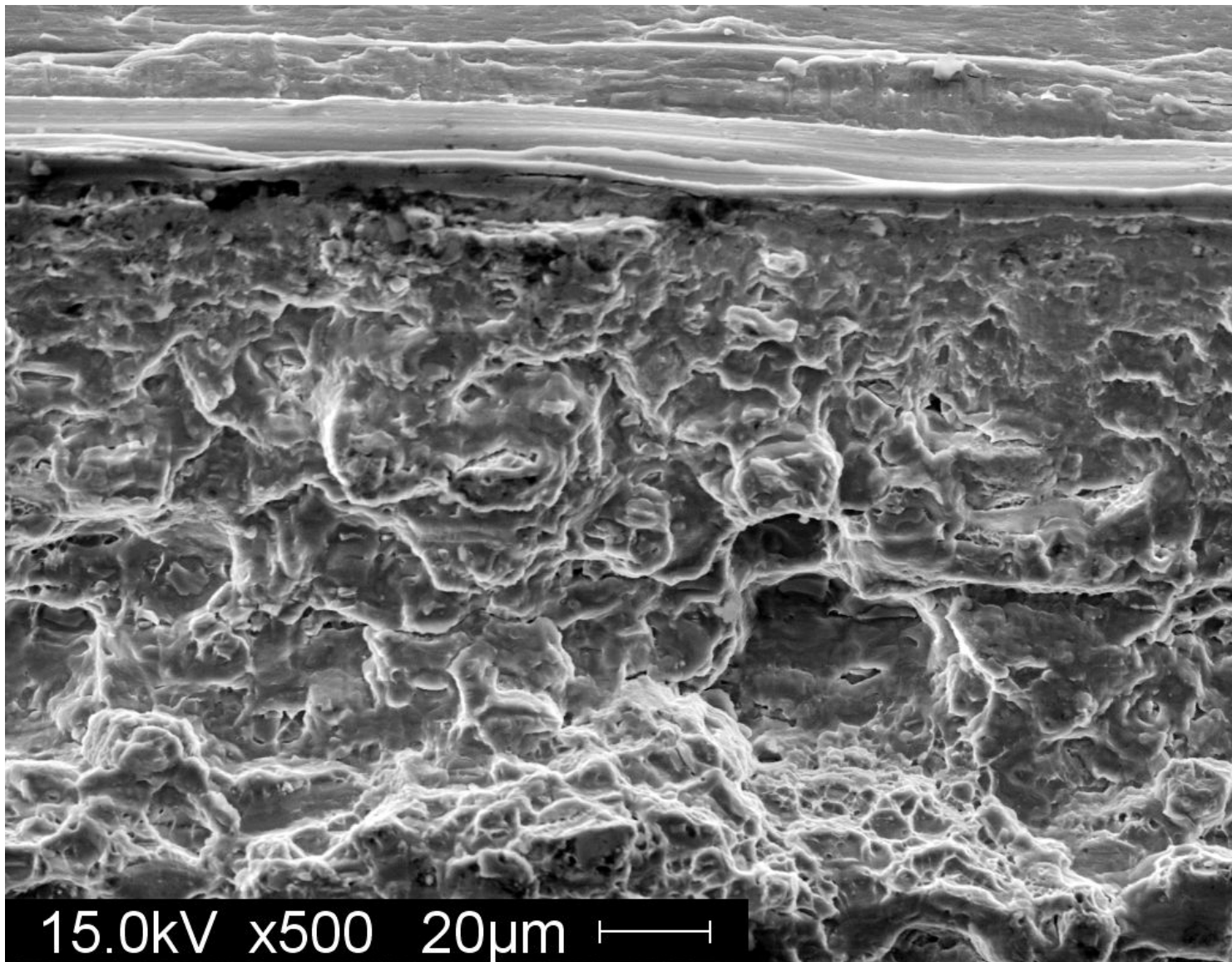
Enlarged view of the trench formed after two passes with the Olfa.



View of the cut edge of an 0.025" 6061-T6 sheet after repeated scoring and fatigue.
(Image taken at unknown angle relative to sheet – scale marker for reference only.)



Enlarged view of the trench wall from the cut edge.



Enlarged view of the fractured wall from the cut edge.